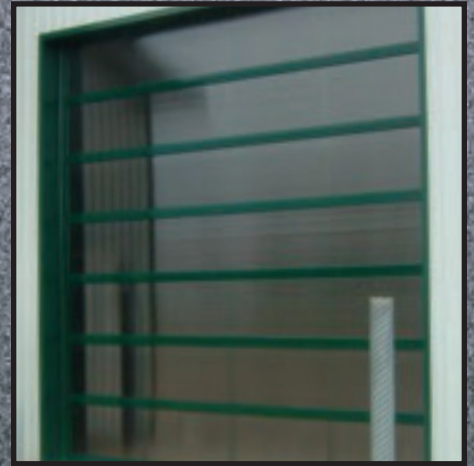


COMMERCIAL & INDUSTRIAL OVERHEAD SECTIONAL DOORS



CROSKILL

OVERHEAD DOORS LTD

CR175



WINDOW OPTIONS



- 24" x 12" Thermal Glass Window



- 34" x 16" Thermal Glass Window



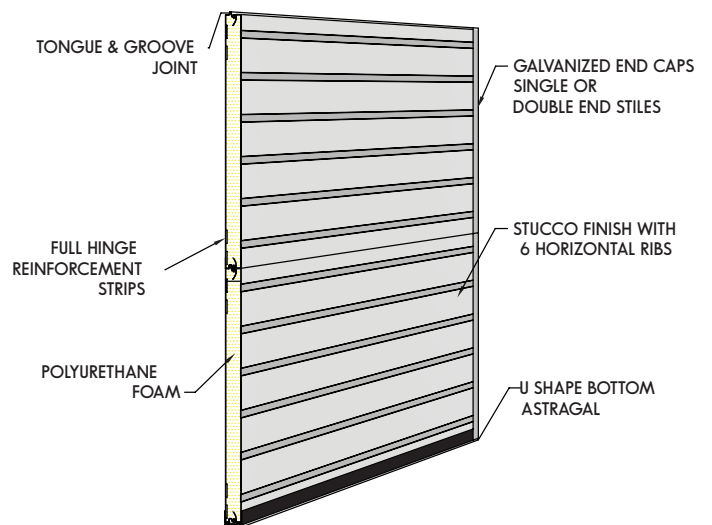
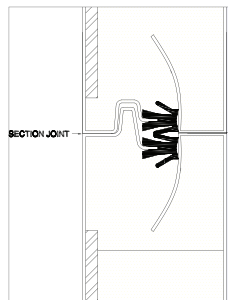
- Aluminum Full Vision Lite Section

COLOURS

- White
- Brown
- Taupe

SPECIFICATIONS

- Stucco embossed, ribbed for added strength.
- Continuous roll formed steel sections from Pre-finished Exterior Polyester On Galvanized QC 5932 white steel
- Thermally broken with between section weather seal
- Tongue & Groove section joint
- Continuous process foamed-in-place CFC FREE polyurethane insulation core
- CR175 Panel thickness - 1 3/4"
- 4 continuous steel hinge strips at top & bottom of section for mounting full hinges
- Sections capped with galvanized end caps pre-drilled for hinge placement
- Sections pre-drilled for hinge alignment
- Bottom section weather stripped with U shaped astragal & PVC retainer.



STEEL INSULATED

POLYCARBONATE



SPECIFICATIONS

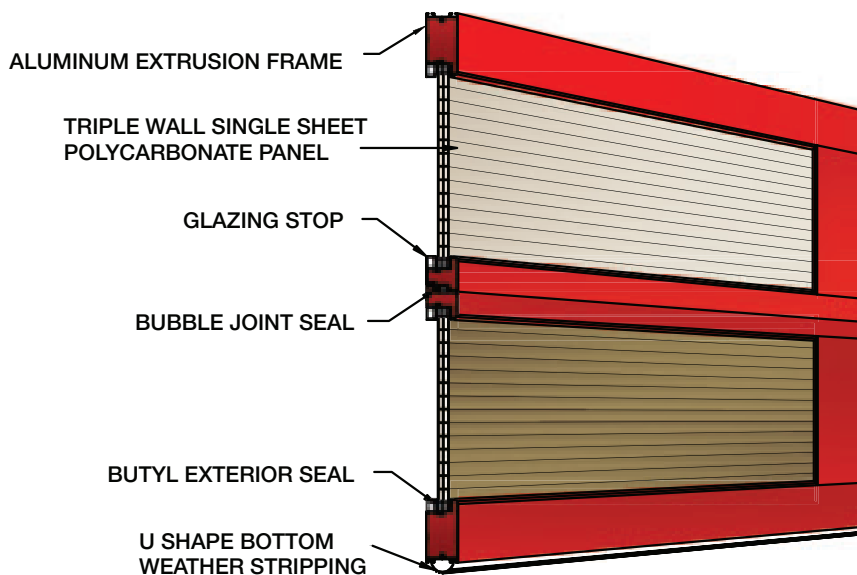
- One piece polycarbonate sheet per section, 16 mm, 3 wall construction, available in clear or bronze
- Encased in a tubular aluminum frame which has been powder coated, or clear anodized aluminum
- PVC weather seal between each section
- Bottom section weather stripped with U-shaped astragal

CHARACTERISTICS

- High quality
- Light weight
- Exceptional impact resistance
- Outstanding light transmission
- Thermal insulation
- Energy efficiency gives reductions in heating costs
- Fire resistance

TYPICAL USES

- Warehouses
- Manufacturing plants
- Distribution centres
- Agricultural buildings
- Car dealerships
- Commercial/industrial applications
- Firehalls
- Residential



OVERHEAD SECTIONAL DOOR

HARDWARE

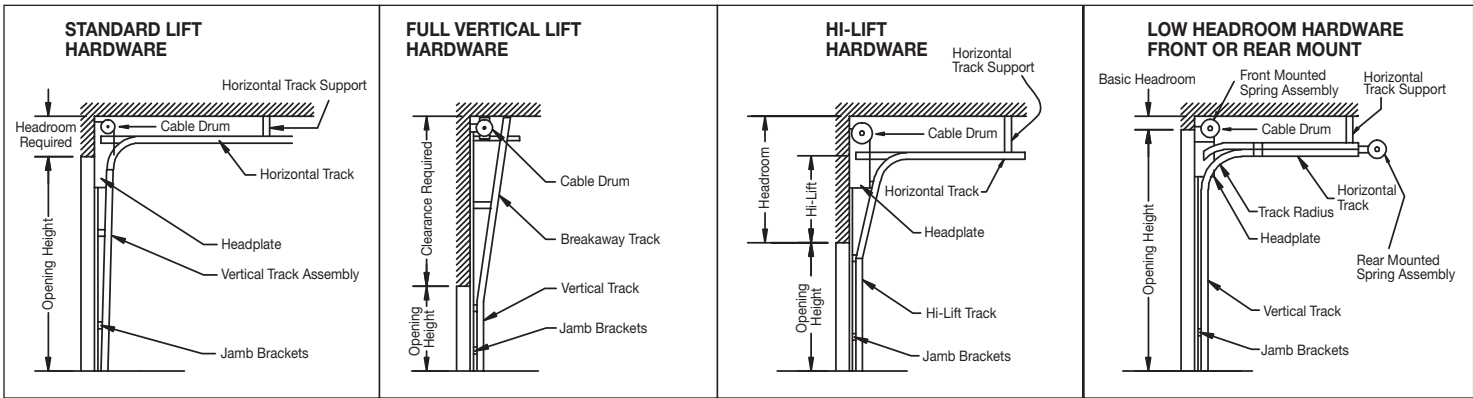
- Track:** 2" or 3" roll formed from galvanized steel, bracket mounted, with 12" or 15" radius horizontal track, with galvanized support angles as required
- Rollers:** Steel 2" or 3" 10 ball
- Hardware:** Stamped from galvanized steel
- Full Hinges**
- Lock:** Interior slide bolt
- Counter Balance:** With helically wound oil tempered torsion springs mounted on a steel shaft, cast aluminum cable drums, galvanized aircraft cable
- Struts:** As required
- Shaft:** 1" steel tube shaft or 1" solid shaft with coupler as required

HEADROOM REQUIREMENTS

Door Movement	2" Hardware	3" Hardware
Low headroom	8"	12"
Standard lift	12" or 15"	18"
High lift	High lift plus 13"	High lift plus 13"
Full vertical lift	Door height plus 24"	Door height plus 24"

OPTIONS

- **Rollers:** 3" sealed bearing rollers
- **High Cycle Springs:** 25,000, 50,000, 100,000 cycle.
- **Double End Hinges**
- **Continuous Angle Mounted Tracks**
- **Gear Hand Chain Hoist**
- **Pusher Springs**
- **Solid Shaft:**
 - 1" Solid Shaft for doors under 130 sq ft (over 130 sq ft, it is Standard)
 - 1 1/4" Solid Shaft for large industrial applications
- **Bar lock**
- **Special Tracking:** High Lift, Pitch, Full Vertical Lift, Low Headroom
- **Powder Coated Hardware:** Tracks, springs, hinges and shafts.
- **Electric operated**



Distributor of:



Commercial and Industrial Door Operators

CROSKILL OVERHEAD DOORS LTD

8358 FAIRLANE RD.,
P.O. BOX 102, LISTOWEL, ON, N4W 3H2
TEL: (519) 291-1034 FAX: (519) 291-5661
E-MAIL: sales@croskilldoors.ca

Distributed by:

